

WATER DAMAGE RESTORATION MASTER KIT



The Master Kit allows for moisture and relative humidity testing and monitoring of buildings and building materials. Featuring the Tramex ME5 for dual-depth, non-invasive testing of moisture conditions in drywall, wood, plaster, brick, tiles, resilient flooring, laminates and roofing. The Tramex CMEX5 digital concrete moisture meter for non-destructive quantitative and comparative testing of concrete and ambient conditions. The CMEX5 incorporates a plug-in heavy-duty pin-probe measures Moisture Content in wood or WME in other building materials. The CMEX5 also incorporates plug-in RH probes for in-situ testing of concrete, building materials, structures and air spaces. These probes can be used with the Feedback Datalogger to give live readings and time logs of relative humidity, temperature and dew point in the environment and in materials and air spaces. An infrared surface thermometer gives surface temperature and dew point conditions used in conjunction with the CMEX5 hygrometer. The Water Damage Restoration Inspection Kit comes with an extension handle in a protective heavy-duty carrying case with die-cut foam lining. The Tramex Meters App allows you to GeoTag test results, create, save and share reports and charts, as well as see your meter screen on your phone when extending to hard to reach places.

TRAMEX METERS APP
FOR IOS & ANDROID DEVICES (PHONE NOT INCLUDED WITH KIT)

Product Code: WDMK

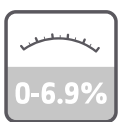


KIT CONTENTS

1. Concrete Moisture Encounter X5 - CMEX5.
2. Moisture Encounter 5 - ME5.
3. Feedback Datalogger - DL-RHTX.
4. App available for Android and iOS (phone not included).
5. Heavy-duty pin-type wood probe.
6. 7.8" (200mm) insulated pins for in-depth penetration.
7. 10" (260mm) Narrow Wand Relative Humidity Probe.
8. 1 x Hygro-i2[®] Relative Humidity probe.
9. Hole liners.
10. Calibration Check Salts.
11. Infrared Thermometer.
12. Extension Handle.



NON-DESTRUCTIVE



CONCRETE %MC
READING RANGE



CM EQUIV CONCRETE
READING RANGE



CM EQUIV ANHYDRITE
READING RANGE



GYPSUM REFERENCE
READING RANGE



AMBIENT
RH, T, DP, gr/lb



IN SITU
RH, T, DP, gr/lb



4mm Ø WAND
RH, T, DP, gr/lb



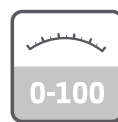
ACCOMPANYING
APP



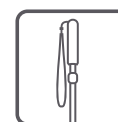
DUAL DEPTH



WOOD %MC
READING RANGE



COMPARATIVE
READING RANGE



EXTENSION HANDLE



ASTM
F2659



ASTM
F2170

SPECIFICATIONS

CONCRETE MOISTURE ENCOUNTER X5 - SPECIFICATIONS & MEASURING RANGE



The Tramex Concrete Moisture Encounter X5 is a non-destructive digital multi moisture meter for concrete floors and slabs providing instant and precise quantitative measurement of moisture content using Gravimetric testing as a baseline. The CMEX5 also provides Carbide Method equivalent readings for concrete and other cementitious substrates as well as comparative readings as per ASTM F2659. Incorporating plug-in ports for the optional Hygro-i2® relative humidity probe testing per ASTM F2170 and heavy-duty pin-type wood probes, this moisture meter transforms into the ideal all-in-one instrument for the flooring professional.

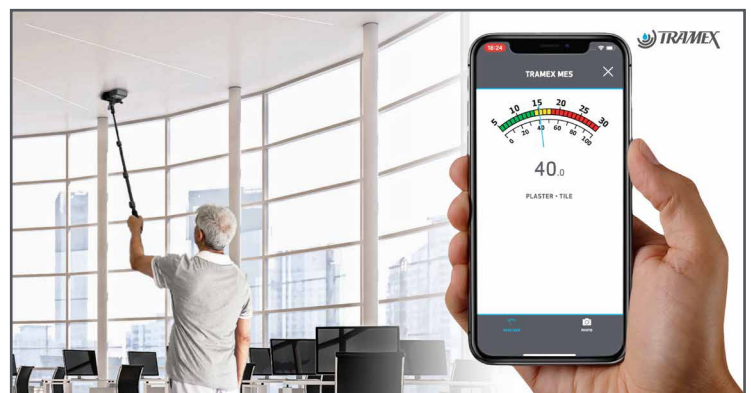
Size:	7.1" x 3.4" x 1.6" (180mm x 85mm x 40mm)	Moisture content for Concrete:	0 → 6.9 %
Weight:	12.59oz (357g)	Comparative for Gypsum floor screed:	0 → 12
Construction:	ABS Body	CM Equiv Anhydrite/Concrete:	0 → 2.7 / 0 → 4.3
Power:	2 x AALR6 ALKALINE (included)	Reference scale:	0 → 100
Display:	Digital	Relative Humidity	
Depth of penetration in concrete:	approx. ¾" (20mm)	(with Hygro-i2® probe):	0 → 99%
		Humidity accuracy:	0% to 99%RH +/- 2% @ 25°C/77°F
		Moisture content for wood	
		(with wood pin probes):	5 → 30 %

MOISTURE ENCOUNTER 5 - SPECIFICATIONS & MEASURING RANGE



The Tramex Moisture Encounter is a Dual-Depth, non-destructive moisture meter for instant moisture measurement and evaluation. Deep Depth penetration up to 1.25" (30mm) & Shallow Depth penetration up to 0.40" (10mm). 5 Ranges of sensitivity: Wood & Timber / Shallow Depth / Drywall & Roofing / Plaster & Tile / Masonry, making the Moisture Encounter ideal for testing in and through a wide range of materials in the building envelope.

Size:	6.3" x 3.5" x 1.5" (160mm x 85mm x 38mm)	Wood Moisture Content:	5 to 30%
Weight:	9.5oz (270g)	Reference scale for building materials:	0 to 100
Construction:	ABS Body	Depth of penetration:	
Power:	2 x AALR6 ALKALINE (included)	Shallow signal:	up to 0.40" (10mm)
Display:	Analogue	Deep signal:	up to 1.25" (30mm)



SPECIFICATIONS

FEEDBACK DATALOGGER - SPECIFICATIONS & MEASURING RANGE



The Feedback DataLogger and App log up to 100,000 data point entries for relative humidity, temperature, dew point and grains per pound, transmitted wirelessly via Bluetooth BLE technology to your mobile device. Used to perform ASTM F2170 with the Tramex Hygro-2 probe.

Size:	3.94" x 3.54" x 1.38" (100mm x 90mm x 35mm)	Memory:	100,000 data point entries (samples of Ambient RH and temperature; Surface Temperature)
Weight:	3.53oz (100g)	Logging Rate:	Logger interval adjustable between 5 minutes and 1 hour
Construction:	ABS enclosure	Transmission Range:	Up to 165ft (50m) line-of-sight
Power:	1 x AA type battery 1.5 Volt	Bluetooth:	BLE Bluetooth Low Energy 4.2 compliant, Bluetooth 5 advertising
Included:	Wall Mounting and Tripod Stand		

RELATIVE HUMIDITY SENSOR SPECIFICATIONS

Range:	0 to 100%RH
Accuracy:	±1.5%RH Range 0% to 80%RH ±2.0%RH Range 80% to 99%RH (@ 77°F (25°C))
Resolution:	0.1% over the complete range
Drift:	<0.25%RH per year

TEMPERATURE SENSOR SPECIFICATIONS:

Range:	-40°F to 257°F (-40°C to 125°C)
Accuracy:	±0.1°F Range 68°F to 140°F (±0.1 °C Range 20°C to 60°C)
Sensor Protection:	PTFE Film protects sensor opening from water & dust
Drift:	<0.04°F (0.03°C) per year

Free App Available for Mobile and Tablet:



INFRARED THERMOMETER - IRT2 - SPECIFICATIONS & MEASURING RANGE



The IRT2 is a handheld, dual laser, non-contact Infrared Thermometer with 12:1 distance to spot ratio and audible and visible high/low set point alarms. It is used to measure and display surface temperatures within the range of -58°F to 1202° (-50°C to 650°C) and has an accuracy of approximately 1 to 1.5% (see Specifications for details). The IRT2 has a fast response time (0.15 sec) and is powered with a 9V battery and complies with Class II UK/EU laser safety standard EN60285.

Temperature range:	-58°F ~ 1202°F (-50 to 650 °C)
Distance to Spot ratio:	D:S = 12:1
Accuracy for targets assuming ambient operating temperature of 73 to 77°F (23 to 25 °C):	-58°F ~ 68°F (-50 ~ 20°C) ±4.5°F(2.5°C) 68°F ~572°F (20°C ~300°C) ±1.0% ±1.8°F (1.0°C) 572°F ~ 1202°F (300°C ~ 650°C) ±1.5%
Emissivity:	Digitally adjustable from 0.10 to 1.0
Power supply:	9V battery, NEDA 1604A or IEC 6LR61, or equivalent.

SPECIFICATIONS

KIT SPECIFICATIONS

Size: 20.5" x 18.9" x 5.9" (52cm x 48cm x 15cm)
Power: 5 x AA batteries, 1 x 9 volt PP3 battery

Weight: 10.8 lbs (4.9kg)

